

MakaiPlan 4.1 Upgrade

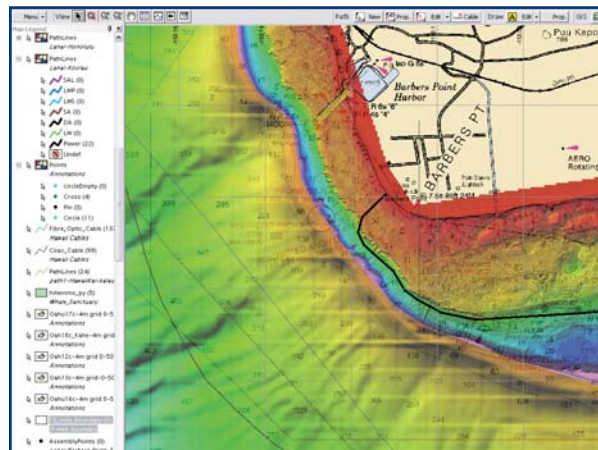


1. Windows 7™, Vista™ and Windows XP™ compatible.
2. Fully compatible with earlier versions of MakaiPlan.
3. New FME (Feature Manipulation Engine) add-on provides the capability to import over 150 different formats of GIS data, including S57, Digital Nautical Charts and many ESRI formats.

New Formats Supported by FME Module
Autodesk AutoCAD (DWF)
Autodesk MapGuide (SDF)
Autodesk AutoCAD (DWG/DXF)
Digital Nautical Charts (VPF)
Electronic Navigation Charts (ENC S57)
ESRI ArcGIS Map
ESRI ArcGIS Layer
ESRI ArcInfo Coverage
ESRI ArcInfo Export (E00)
MapInfo (MIF/MID)
Over 150 Additional Formats...

4. Zoom in/out of the Plan View using the mouse scroll.
5. The Map Legend, Project Explorer, Properties window, Cable and Cable Body List, and all the Tools are now “tear off” windows that can be displayed outside of the main MakaiPlan window.

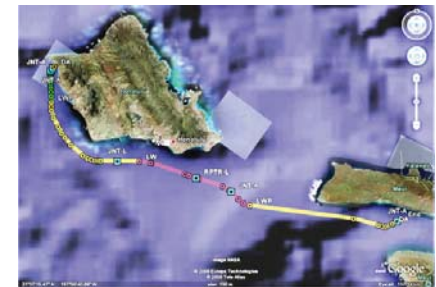
6. Save & restore custom layout of docked windows.
7. Scale bar and north arrow can now be printed on map.
8. Works with Geomedia 6.1.
 - Transparency functions for GIS layers
 - Dockable legend
 - Collapsible menus
 - Display of GIS features highly customizable
 - Better management of GIS database.



9. Properties (color, style, title, etc.) in legend are persisted.
10. New User Defined Fields window allows users to

add custom path or assembly properties and render the path or assembly by those properties in the plan view.

11. Grid points can now be exported to an ArcInfo ASCII grid file using the Makai DTM module.
12. Export cable paths to Keyhole Markup Language (KML) for display with Google Earth™ and Maps™.



13. The distance measurement tool now shows the slope between contours as well as distance.
14. Multiple path points can be moved simultaneously during editing.
15. DBDB-V formatted bathymetry data can now be imported into the Makai DTM module.
16. Additional features and fixes...
 Each upgrade includes a one-year maintenance contract. For more information and pricing, contact Makai Ocean Engineering.