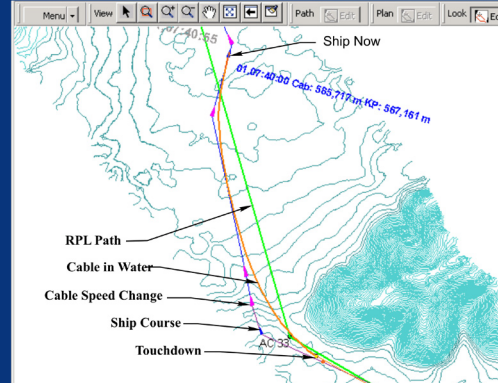
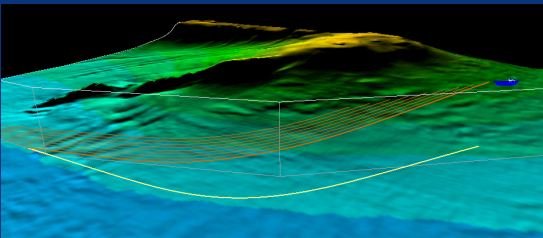


MakaiPlan Pro 3.4 Upgrade




Makai Ocean Engineering
makaiplanpro@makai.com
Phone 1 808.259.8871
Fax 1 808.259.8238

1. New Makai DTM module (add-on) includes an easy-to-use wizard transforming your raw survey point data into grid data and georeferenced color shaded relief maps.
2. Simulation speed increased 4x.
3. Improved simulation data storage: size of data files reduced by a factor of four.
4. Easily incorporate ocean currents in your simulations: create and use simple or more realistic currents that change with time and depth.
5. Serial ports no longer required to run simulations.
6. 3D finite element cable model improved and optimized for specific applications such as seismic, flexible pipes, and deployment of scientific and defense

- arrays. Over 100 cable bodies and joints can now be modeled simultaneously in the water column.
7. Capability to model installations using top tension measurements and peel-off tension modes instead of cable length (roto measurements).
8. Post processing capabilities: load navigation and cable engine data collected at-sea with third party software and fully model installation in the office to generate true, as-laid RPL.
9. Tools to estimate surface slack can be used during transients (speed changes and cable transitions) going over irregular bottom to achieve a desired seabed slack.

10. Fast dynamic tools to compute optimum payout rates during any situation including transients and emergency situations.
11. Backup, restore and merge data from different simulations.
12. Enhanced 3D viewer with multiple new options and displays.
13. Includes all new features from MakaiPlan 3.2.
14. Your competition has it, shouldn't you?

Each upgrade includes a one-year maintenance contract. For more information and pricing, contact Makai Ocean Engineering.